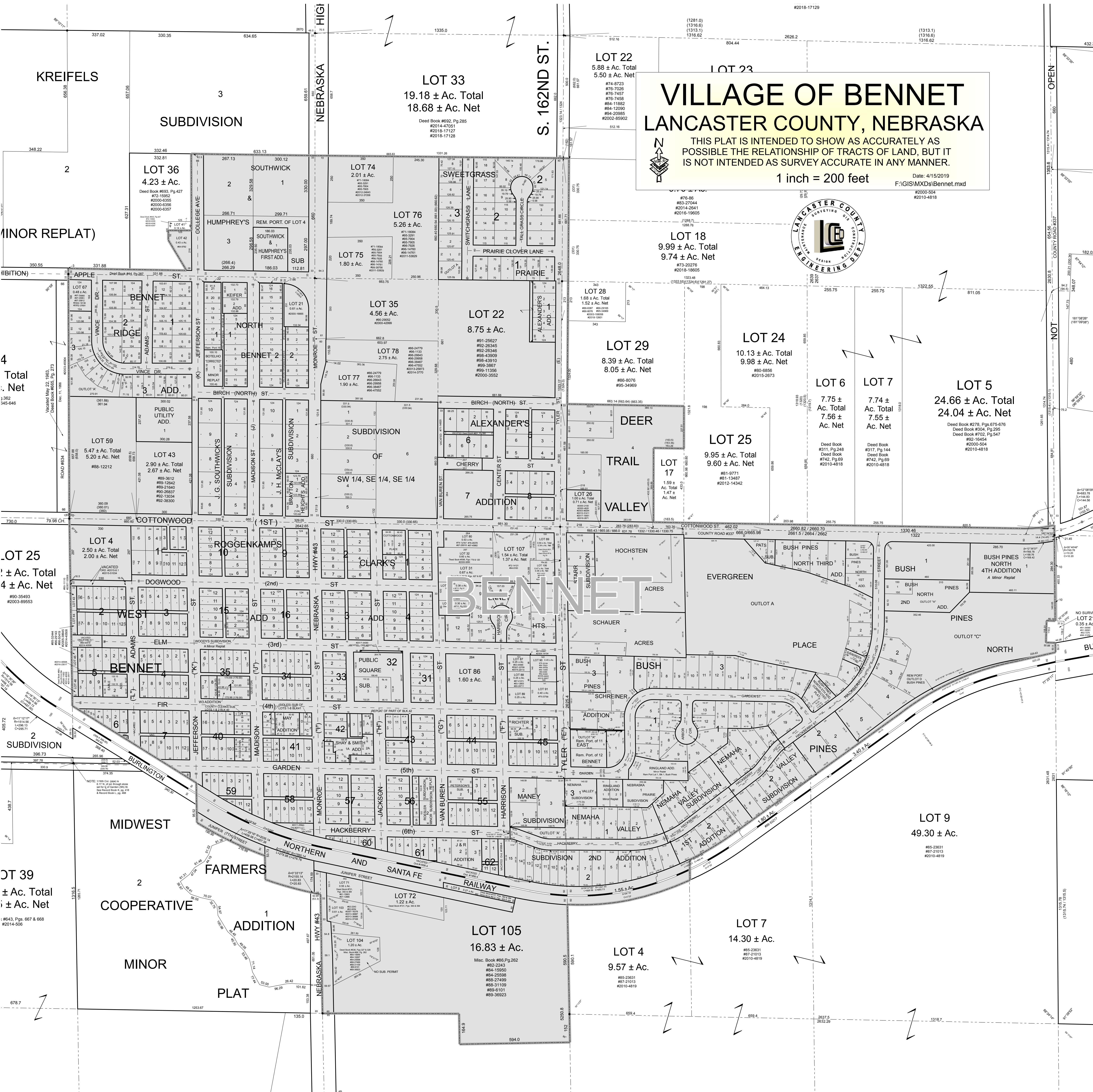


# VILLAGE OF BENNET LANCASTER COUNTY, NEBRASKA

THIS PLAT IS INTENDED TO SHOW AS ACCURATELY AS POSSIBLE THE RELATIONSHIP OF TRACTS OF LAND, BUT IT IS NOT INTENDED AS SURVEY ACCURATE IN ANY MANNER.

1 inch = 200 feet  
Date: 4/15/2019  
F:\GIS\MXDs\Bennet.mxd



**LOT 33**  
19.18 ± Ac. Total  
18.68 ± Ac. Net  
Deed Book #692, Pg 285  
#2014-47051  
#2018-17129  
#2018-17128

**LOT 22**  
5.88 ± Ac. Total  
5.50 ± Ac. Net  
#74-8723  
#76-7026  
#76-7457  
#76-7458  
#84-11882  
#84-12090  
#94-20985  
#2002-85902

**LOT 18**  
9.99 ± Ac. Total  
9.74 ± Ac. Net  
#73-20276  
#2018-19605

**LOT 28**  
1.88 ± Ac. Total  
1.52 ± Ac. Net  
#99-007  
#99-016  
#99-017  
#2018-19001

**LOT 29**  
8.39 ± Ac. Total  
8.05 ± Ac. Net  
#86-8076  
#95-34969

**LOT 24**  
10.13 ± Ac. Total  
9.98 ± Ac. Net  
#80-6366  
#2015-2673

**LOT 6**  
7.75 ± Ac. Total  
7.56 ± Ac. Net  
Deed Book #311, Pg 248  
Deed Book #742, Pg 69  
#2010-4818

**LOT 7**  
7.74 ± Ac. Total  
7.55 ± Ac. Net  
Deed Book #317, Pg 144  
Deed Book #742, Pg 69  
#2010-4818

**LOT 5**  
24.66 ± Ac. Total  
24.04 ± Ac. Net  
Deed Book #278, Pgs 675-676  
Deed Book #304, Pg 295  
Deed Book #702, Pg 547  
#82-18454  
#2000-504  
#2010-4818

**LOT 25**  
9.95 ± Ac. Total  
9.60 ± Ac. Net  
#81-9771  
#81-13487  
#2012-14342

**LOT 36**  
4.23 ± Ac.  
Deed Book #693, Pg 427  
#72-15952  
#2000-6355  
#2000-6356  
#2000-6357

**LOT 59**  
5.47 ± Ac. Total  
5.20 ± Ac. Net  
#88-12212

**LOT 43**  
2.90 ± Ac. Total  
2.67 ± Ac. Net  
#89-3612  
#89-12942  
#89-21640  
#90-26837  
#92-13034  
#92-38300

**LOT 25**  
2.50 ± Ac. Total  
2.00 ± Ac. Net  
#90-36483  
#2003-89553

**LOT 39**  
± Ac. Total  
± Ac. Net  
#643, Pgs 667 & 668  
#2014-506

**LOT 105**  
16.83 ± Ac.  
Misc. Book #86, Pg 262  
#82-2243  
#84-19990  
#84-25598  
#88-27499  
#88-31109  
#89-81101  
#89-36923

**LOT 4**  
9.57 ± Ac.  
#85-23631  
#87-21013  
#2010-4819

**LOT 7**  
14.30 ± Ac.  
#85-23631  
#87-21013  
#2010-4819

**LOT 9**  
49.30 ± Ac.  
#85-23631  
#87-21013  
#2010-4819