

02-07-07

01-07-07

12-07-07

11-07-07

S. 96TH ST.

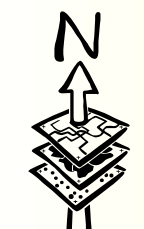
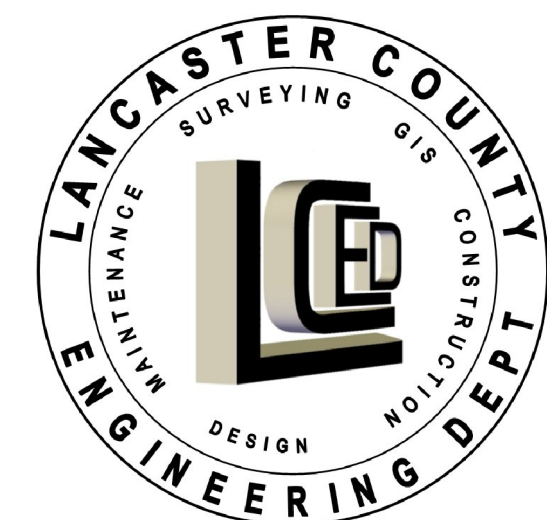
PANAMA RD.

HOLLAND LANCASTER COUNTY, NEBRASKA

THIS PLAT IS INTENDED TO SHOW AS ACCURATELY AS POSSIBLE THE RELATIONSHIP OF TRACTS OF LAND, BUT IT IS NOT INTENDED AS SURVEY ACCURATE IN ANY MANNER.

1 inch = 200 feet

Date: 4/15/2019
J:\files 1\ VillagePlatMXDs\Denton.mxd



LOT 74
25.00 ± Ac. Total
24.17 ± Ac. Net
Deed Book #611, Pg 21
#75-14723
#76-11471
#90-38378
#96-49741
#2014-9626

LOT 68
49.09 ± Ac.
#2012-29795
#2012-30240

LOT 73
10.00 ± Ac. Total
9.67 ± Ac. Net
Deed Book #330, Pg 141
Deed Book #366, Pg 46
Deed Book #481, Pg 209
Deed Book #517, Pg 443
#90-38378
#94-14760
#2015-16183

LOT 65
8.17 ± Ac.
#99-65815
#2000-30508
#2000-34605
#2003-55101
#2003-57795
#2005-67755
#2010-58117
#2010-58118

**NO SURVEY
LOT 63**
15.90 ± Ac.
#99-65815
#2000-30508
#2000-34605
#2005-67755
#2010-58117
#2010-58118

LOT 51
2.53 ± Ac. Total
2.526 ± Ac. Net
#2015-16183

LOT 50
2.47 ± Ac. Total
2.31 ± Ac. Net
#2015-16183

LOT 36
9.77 ± Ac.
Deed Book #730, Pg 533
#76-18822
#2004-29296
#2008-21381
#2008-21382
#2009-13449
#2017-28393
#2018-46459

LOT 64
3.70 ± Ac.
#99-65815
#2000-30508
#2000-34605
#2003-55101
#2003-57795

LOT 38
1.49 ± Ac.
#95-15023
#96-22784
#2000-48709

LOT 80
5.69 ± Ac. Total
5.68 ± Ac. Net
#94-14760
#2015-16183

LOT 81
3.07 ± Ac. Total
2.96 ± Ac. Net
#94-14760
#2015-16183

LOT 60
1.06 ± Ac.
#93-15752
#93-15753
#97-36426

LOT 53
22.78 ± Ac.
#93-15752
#93-15753
#97-36426

LOT 71
9.99 ± Ac.
#71-6077
#90-33698
#96-42126
#96-42127

LOT 87
0.71 ± Ac.
#94-14760
#2015-16183

LOT 88
0.08 ± Ac.
#94-14760
#2015-16183

LOT 89
0.09 ± Ac.
#94-14760
#2015-16183

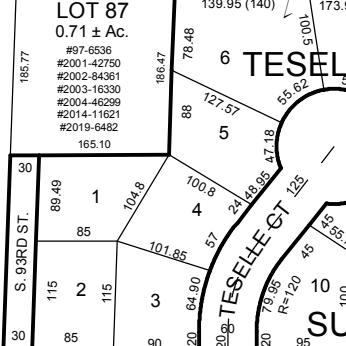
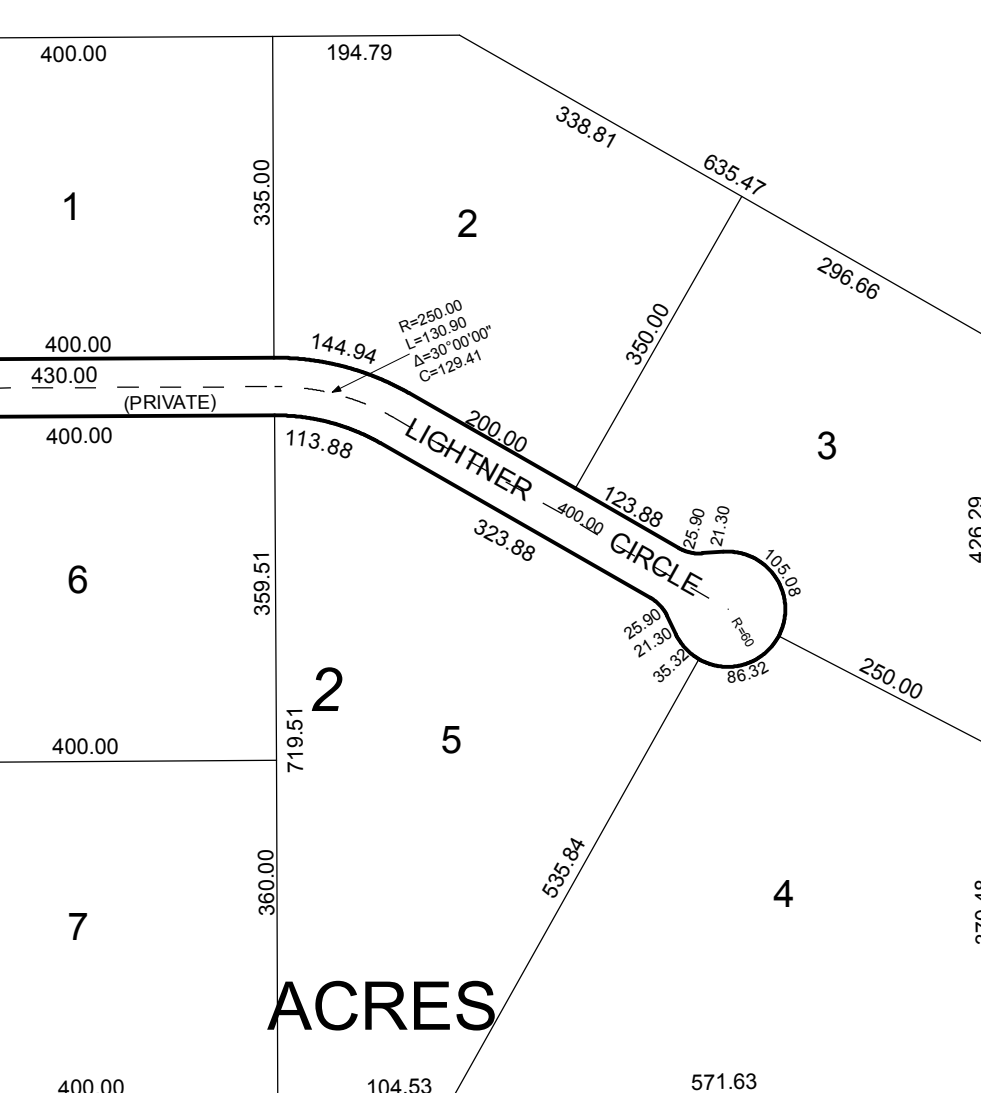
LOT 86
0.77 ± Ac.
#94-14760
#2015-16183

LOT 84
0.48 ± Ac.
#94-14760
#2015-16183

LOT 85
0.51 ± Ac.
#94-14760
#2015-16183

LOT 50
0.70 ± Ac. Total
0.61 ± Ac. Net
#94-14760
#2015-16183

LOT 24
0.61 ± Ac. Total
0.51 ± Ac. Net
#94-14760
#2015-16183



LOT 15
3.75 ± Ac.
Deed Book #87, Pg 613

**NO SURDIVISION PERMIT
LOT 69**
3.25 ± Ac.
#76-20901 #2008-2643
#96-4727 #2017-161
#96-6430 #2018-3022
#2008-2042 #2018-3023

LOT 28
1.03 ± Ac.
#71-1881
#91-1634
#94-2087
#94-2091

LOT 27
2.97 ± Ac.
#94-25956
#96-56888
#2009-52123

LOT 30
1.78 ± Ac.
#71-3006
#93-1442
#93-1443
#2004-27978
#2007-10086
#2007-28971
#2011-58291

LOT 46
7.19 ± Ac.
#94-14760
#2015-16183

LOT 33
5.17 ± Ac.
Deed Book #491, Pg 475
Deed Book #491, Pg 477
#70-3381
#70-3381
#71-733
#74-14859
#91-15094

LOT 70
32.62 ± Ac.
Deed Book #505, Pg 501
Deed Book #622, Pg 1
#95-1140
#97-31537
#98-4727
#98-6430

LOT 58
6.78 ± Ac.
#95-1140
#95-1142

**NO SURVEY
LOT 77**
10.61 ± Ac.
Deed Book #118, Pg 594
Deed Book #320, Pg 368
#95-1140
#2000-30503
#2001-42749
#2001-17005
#2012-9642
#2012-16097
#2016-52268

LOT 48
1.94 ± Ac.
#97-36426
#97-36426

LOT 53
28.99 ± Ac.
#70-3381
#99-17376
#95-30081
#95-30085
#95-30620
#95-37103
#96-4332
#99-64606
#99-37026

LOT 32
38.64 ± Ac.
Deed Book #491, Pg 475
Deed Book #491, Pg 477
#70-3381
#89-17376

LOT 63
57.43 ± Ac. Total
57.34 ± Ac. Net
Deed Book #420, Pg 533
#82-1815
#83-4191
#97-6272
#99-12119
#99-22887
#99-59929
#99-60450
#2007-29248

**NO SURVEY
LOT 62**
21.91 ± Ac. Total
21.00 ± Ac. Net
#97-9272