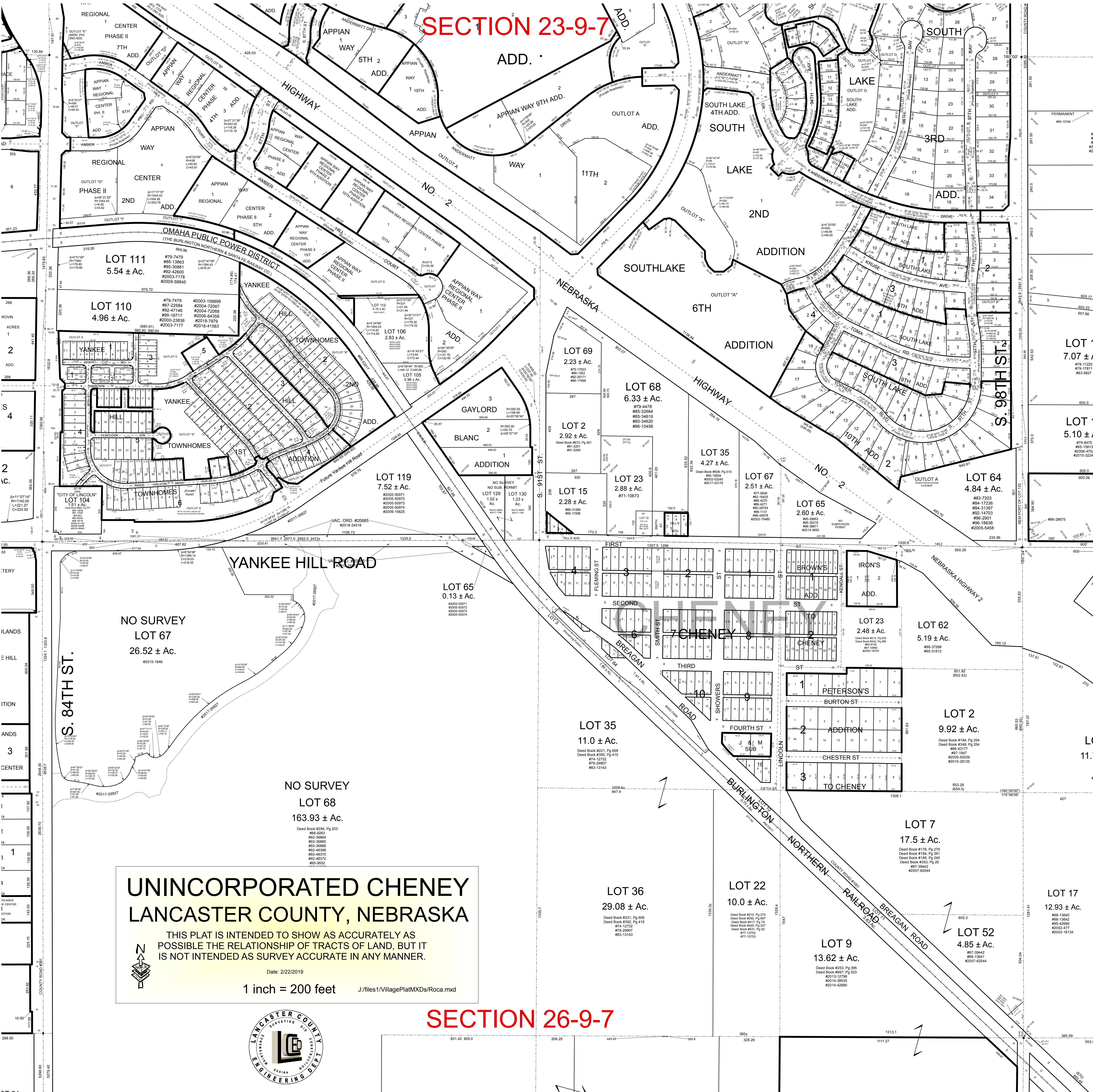


SECTION 23-9-7



UNINCORPORATED CHENEY LANCASTER COUNTY, NEBRASKA

THIS PLAT IS INTENDED TO SHOW AS ACCURATELY AS POSSIBLE THE RELATIONSHIP OF TRACTS OF LAND, BUT IT IS NOT INTENDED AS SURVEY ACCURATE IN ANY MANNER.



Date: 2/22/2019

1 inch = 200 feet

J:\files\1\illagePlatMXDs\Roca.mxd



SECTION 26-9-7

Vertical text on the right edge of the page, including 'COUNTY ROAD', 'PERMANENT', and various lot numbers and acreages.