

Lancaster County Weed Control – City of Lincoln Weed Abatement

2014 Weed Program Activities

DECEMBER 2014

| | |
|-------------------------|---|
| 2014 Program Activities | 1 |
| Play Clean Go | 1 |
| Noxious Weed ID Guide | 2 |

“I am very proud of our staff to be able to handle this 46.9% increase in work while being able to hold our budget to only a 1.78% increase over the same period”



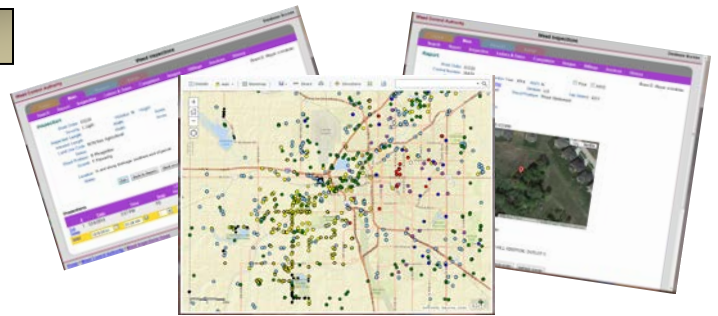
“The goal is to encourage outdoor recreation while protecting valuable natural resources”

Inspection Activities

Once again our inspection totals increased dramatically in 2014. Our overall inspections were up 14.1% over the 2013 inspections, this following a year where inspections were up 28.8% from 2012 to 2013. In short, our 2-year workload increased by a whopping 46.9%. In 2012 we completed 7,510 total inspections compared to 11,034 in 2014. I am very proud of our staff to be able to handle this 46.9% increase in work, while being able to hold our budget to only a 1.78% increase over the same period.

Technology

Every year we take a hard look at how we operate and look for ways to be more effective, at the same time being more efficient. In tough budget times it's hard to



Information Services support with our inspection and mapping programs enables our inspectors to enter information live from the field!

spend money, but we made the decision to spend the money on updating from our smart phones to tablets. By doing this our inspectors were able to significantly increase their productivity. We decreased the time entering data on each inspection and are able to quickly print preselected work orders at the end of the day. All of our data is now sent live back to the office. This is helpful when receiving phone calls during the day.

By cutting 2 minutes off of each inspection we can save 368 hours in labor in just one year.

Route Planning

Another change we made to be more productive is also technology related. A couple years ago we began using a free mapping program that plans the inspector's route each day. The inspector enters the locations due to be inspected that day and the program automatically routes the quickest route for them, saving time in the office they used to spend trying to figure out the quickest route. It also gives them directions from site to site, resulting in less time driving, fewer miles traveled and less fuel used daily.

Play Clean Go – National Branding for Invasives

Lancaster County Weed Department adopts PlayCleanGo, an education and outreach campaign for outdoor recreationalists. The goal is to encourage outdoor recreation while protecting valuable natural resources. The objective is to slow or stop the spread of invasive species through changes in public behavior. The campaign is designed to foster active participation in actions designed to interrupt recreational pathways of spread for invasive species.

PlayCleanGo promotes awareness, understanding, and cooperation by providing a clear call to action to be informed, attentive and accountable for stopping the spread of terrestrial invasive species. By adopting this already designed advertising, our office will be able to have access to all the PlayCleanGo materials to help us educate the public on invasives species. We can also adapt to other logos; WorkCleanGo, FarmCleanGo, etc.

**Lancaster County
Weed Control**
444 Cherrycreek Rd. Bldg B
Lincoln, NE. 68528

Phone:
402.441.7817

Fax:
402.441.8616

E-mail:
weeds@lancaster.ne.gov

Good Neighbors Control Their Weeds!



We're on the Web!
[www.lancaster.ne.gov/
weeds](http://www.lancaster.ne.gov/weeds)

Nebraska's Noxious Weeds

It is the duty of each person who owns or controls land to effectively control noxious weeds on such land.

Noxious weed is a legal term used to denote a destructive or harmful weed for the purpose of regulation. The Director of Agriculture establishes which plants are noxious. These non-native plants compete aggressively with desirable plants and vegetation. Failure to control noxious weeds in this state is a serious problem which is detrimental to the production of crops and livestock, and to the welfare of residents of this state. Noxious weeds may also devalue land and reduce tax revenue.

| | | |
|--|---|--|
| <p>Musk Thistle Height 1.6–9.8 ft</p> <p>Pink to purple flowers Mature seedhead</p> | <p>Canada Thistle Height 1–3.9 ft</p> <p>Pink to purple flowers</p> | <p>Plumeless Thistle Height 1–4.9 ft</p> <p>Purple flowers</p> |
| <p>Phragmites Height 3.2–20 ft</p> <p>Young seedhead Mature seedhead</p> | <p>Leafy Spurge Height .3–2.6 ft</p> <p>Large yellow leaves (bracts) Stems/leaves have milky sap</p> | <p>Sericea Lespedeza Height 1.5–6.5 ft</p> <p>White or cream to yellowish white flowers</p> |
| <p>Japanese Knotweed Height 3–10 ft</p> <p>Creamy white to greenish white flowers</p> | <p>Giant Knotweed Height 8–13 ft</p> <p>Creamy white to greenish white flowers</p> | <p>Purple Loosestrife Height 1.3–8 ft</p> <p>Purple to magenta flowers</p> |
| <p>Saltcedar Height 3.3–20 ft</p> <p>Pink to white flowers</p> | <p>Spotted Knapweed Height 1–3.9 ft</p> <p>Lavender to purple flowers</p> | <p>Diffuse Knapweed Height 1–3.9 ft</p> <p>White/purplish flowers</p> |

GOOD NEIGHBORS CONTROL NOXIOUS WEEDS

If you have questions or concerns about noxious weeds, please contact your local county noxious weed control authority, Nebraska Weed Control Association (www.neweed.org), or Nebraska Department of Agriculture (www.agr.ne.gov/noxious_weed)

Download to print from our website: weeds.lancaster.ne.gov