



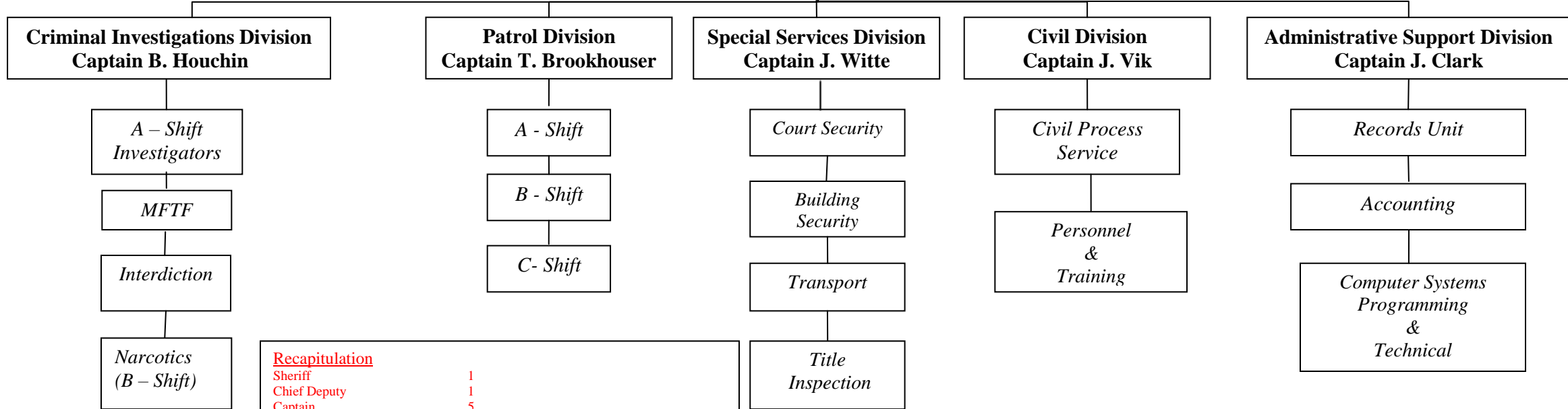
# Lancaster County Sheriff's Office



**Terry T. Wagner - SHERIFF**

Administrative Aide – Judith Lewis Cairns

**Todd J. Duncan - Chief Deputy**



<u>Recapitulation</u>			
Sheriff	1		
Chief Deputy	1		
Captain	5		
Sergeant	13		
Deputy	55	Commissioned	78
Administrative Aide	1	Civilian	19
Court / Security Officer	11	Building Security	8
Financial Coordinator	1		
Clerk Typist III	3		
Records Systems Specialists	8	<b>Total Employees:</b>	<b>105</b>
System Programmer	1		
Computer Tech	1		
Security Tech	1		
Vacancy/FTO	3		
<b>Total Employees:</b>	<b>105</b>		