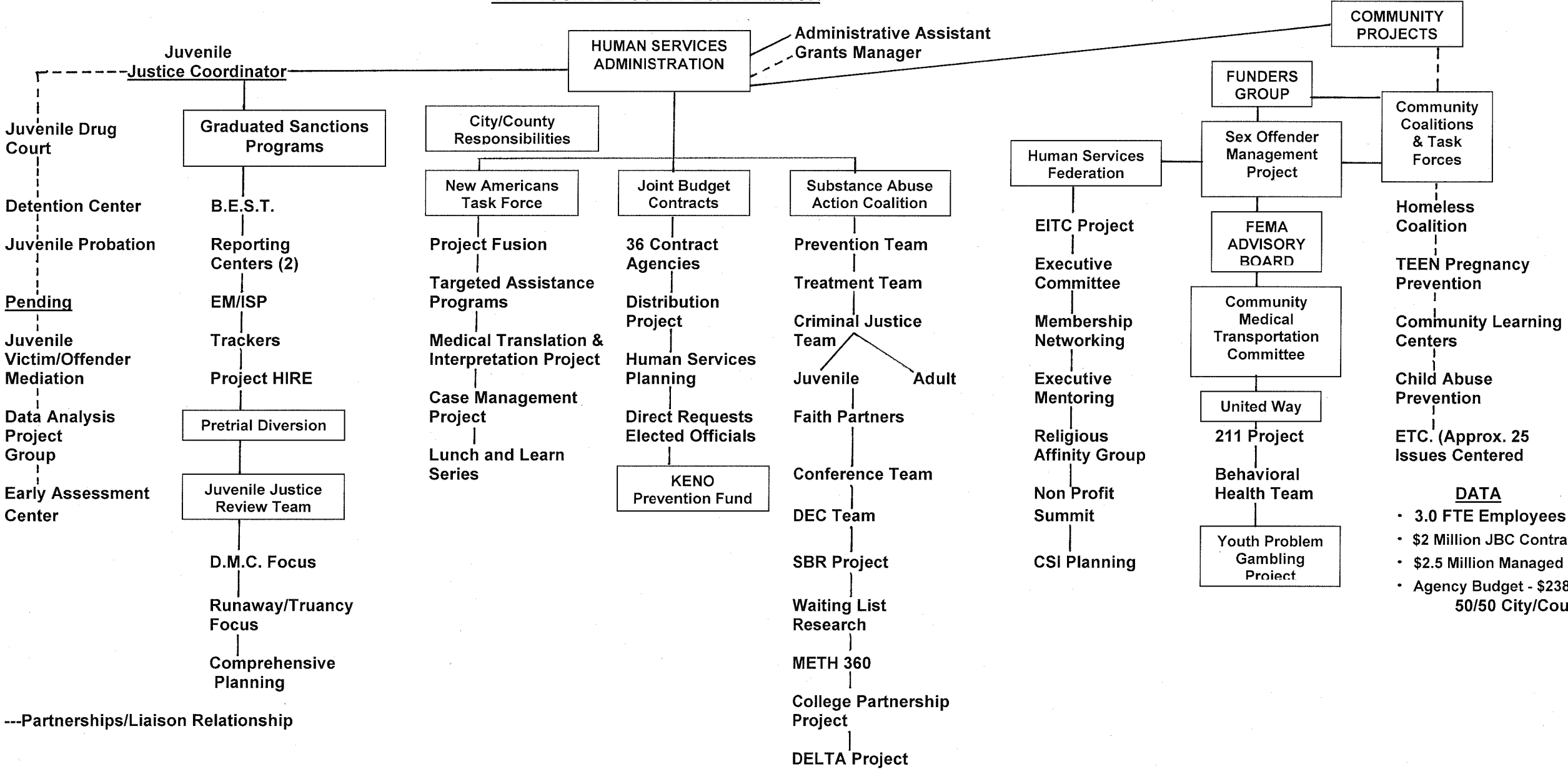


HUMAN SERVICES AT A GLANCE

CITY COUNCIL/COUNTY BOARD/MAYOR



---Partnerships/Liaison Relationship

- DATA**
- 3.0 FTE Employees
 - \$2 Million JBC Contracts
 - \$2.5 Million Managed Grants
 - Agency Budget - \$238,531
 - 50/50 City/County