

LOT 17
66.24 ± Ac. Total
65.45 ± Ac. Net
Deed Book #677, Page 653
Deed Book #749, Page 245
#75-5481
#2012-13414

NE 1/4, SW 1/4
40.00 ± Ac.
Deed Book #594, Page 655
Deed Book #677, Page 601
#75-5481
#2012-13414

LOT 3
34.33 ± Ac.
Deed Book #474, Page 41
#75-5480
#99-23748
#2016-15624

LOT 21
38.48 ± Ac.
#75-6129
#77-12677
#2016-15624

30-07-06

LOT 23
73.56 ± Ac. Total
72.59 ± Ac. Net
Deed Book #447, Page 451
Deed Book #740, Page 533
#93-20679
#99-45262
#2019-1901
#2019-1902

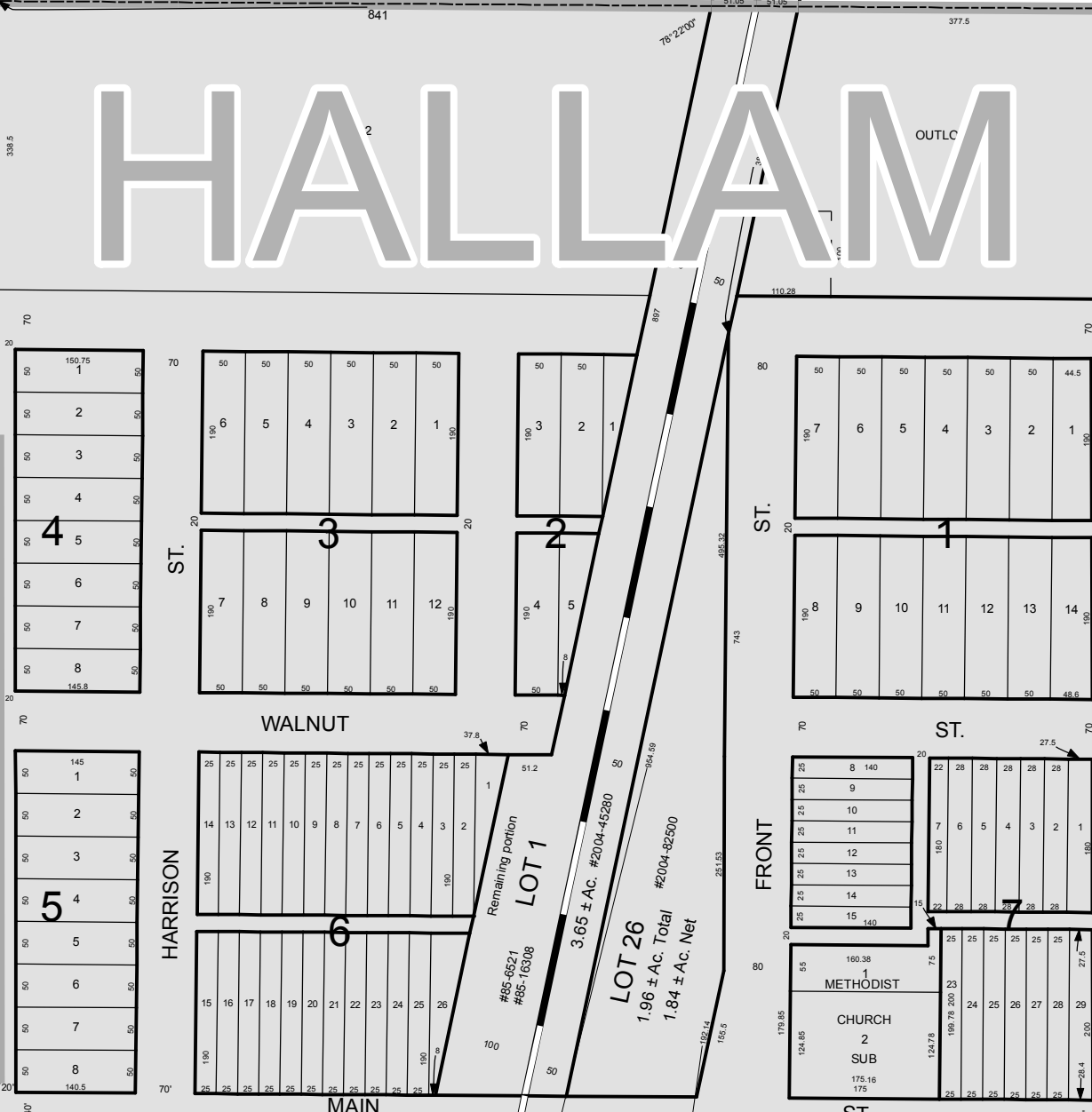
LOT 2
2.05 ± Ac.
Deed Book #77, Page 100
Deed Book #107, Page 101
#93-20682

LOT 13
0.51 ± Ac.
Deed Book #107, Page 101
Deed Book #107, Page 101
#93-20682

LOT 19
6.90 ± Ac.
Deed Book #742, Page 648
#77-11613
#81-45517
#2006-38841
#2016-15624

LOT 28
19.62 ± Ac.
Deed Book #742, Page 648
#77-11613
#81-45517
#2006-38841
#2016-15624

W. HALLAM RD.



LOT 27
4.00 ± Ac.
#2006-38841
#2007-13142

LOT 30
5.00 ± Ac.
#76-13716
#89-9817
#89-9818
#89-9819
#89-9820
#2013-16926

LOT 31
33.13 ± Ac.
#76-13716
#76-26700
#89-9817
#89-9818
#89-9819
#89-9820
#2012-13415
#2012-39162

LOT 33
29.21 ± Ac.
Deed Book #742, Page 656
#77-9963
#97-32620
#86-17087
#99-60031
#2001-2386

LOT 39
73.13 ± Ac. Total
71.17 ± Ac. Net
Deed Book #292, Page 459
Deed Book #741, Page 147
#73-8988
#74-5283
#75-5480
#2012-13414

LOT 26
3.47 ± Ac.
Deed Book #627, Page 573
Deed Book #652, Page 352
Deed Book #693, Page 271
#73-16721
#91-41925
#2000-40439
#2004-45280
#2014-23062

LOT 40
47.52 ± Ac.
Deed Book #627, Page 573
Deed Book #692, Page 352
Deed Book #693, Page 271
#77-9916
#2000-1908
#2004-45280
#2004-64820
#2004-64821
#2018-4455

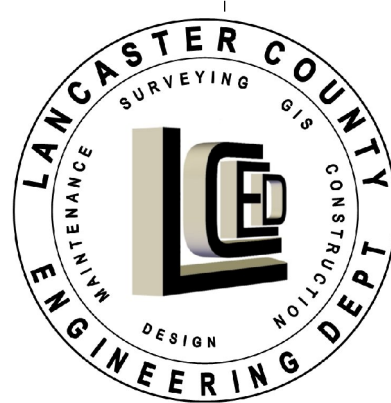
VILLAGE OF HALLAM LANCASTER COUNTY, NEBRASKA



THIS PLAT IS INTENDED TO SHOW AS ACCURATELY AS POSSIBLE THE RELATIONSHIP OF TRACTS OF LAND, BUT IT IS NOT INTENDED AS SURVEY ACCURATE IN ANY MANNER.

1 inch = 200 feet

Date: 2/27/2019
J:\files1\VillagePlatMXDs\Hallam.mxd



31-07-06

LOT 14
5.01 ± Ac.
Misc. Book #71, Page 463
#71-40

S.W. 58TH ST.

S.W. 42ND ST.