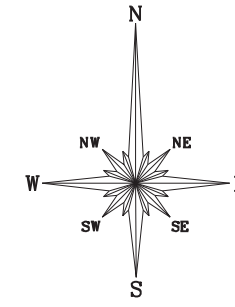


The Incorporated  
**VILLAGE OF DAVEY**

Lancaster County, Nebraska

Scale: 1 inch = 200 feet



DAVEY RD.

SEC.19-T12N-R7E

SEC.20-T12N-R7E

24.62 CH.

COUNTY ROAD #495

SEC.30-T12N-R7E

SEC.29-T12N-R7E

W 1/2, NW 1/4  
95.31 ± Ac. Total  
92.11 ± Ac. Net

DEED BOOK #558, Pgs. 577 & 579  
#79-32337  
#84-31786  
#94-11671

LOT 3  
58.79 ± Ac. Total  
58.06 ± Ac. Net

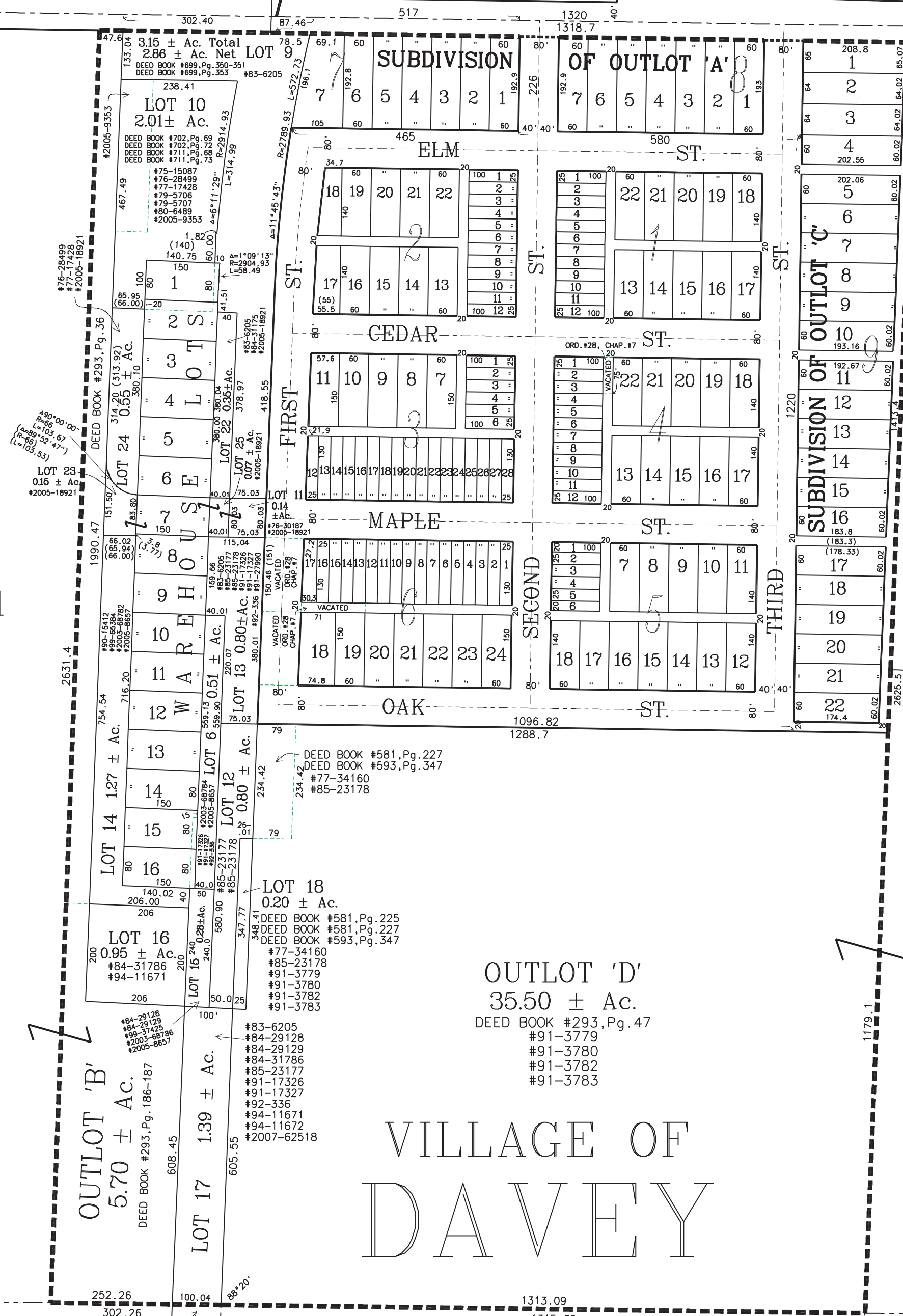
DEED BOOK #558, Pgs. 577 & 579  
#79-32337  
#84-31786  
#94-11671

N 1/2, SW 1/4  
85.28 ± Ac. Total  
84.28 ± Ac. Net

#89-11724  
#94-40216  
#95-20023  
#95-20024  
#95-20025  
#2005-16576

S 1/2, SW 1/4  
83.69 ± Ac. Total  
80.65 ± Ac. Net

#91-20473  
#91-20474  
#91-20475  
#91-20476  
#91-20477  
#91-20478  
#91-20479  
#94-51588  
#95-37976  
#97-11513  
#97-15403  
#97-15405  
#2000-60944  
#2002-28576  
#2002-39256  
#2002-41072



LOT 21  
35.58 ± Ac. Total  
34.27 ± Ac. Net

DEED BOOK #622, Pg. 589  
#90-17560  
#91-3779  
#91-3780  
#91-3781  
#91-3782  
#91-3783  
#91-3784  
#2000-14516

NO  
SUBDIVISION  
PERMIT  
LOT 19  
9.01 ± Ac. Total  
8.47 ± Ac. Net

#2000-14516  
#2000-26533

LOT 20  
34.58 ± Ac. Total  
33.93 ± Ac. Net

DEED BOOK #622, Pg. 589  
#90-17560  
#91-3779  
#91-3780  
#91-3781  
#91-3782  
#91-3783  
#91-3784  
#2000-14516

OUTLOT 'D'  
35.50 ± Ac.

DEED BOOK #293, Pg. 47  
#91-3779  
#91-3780  
#91-3782  
#91-3783

VILLAGE OF  
DAVEY

N 1/2, SE 1/4  
80.00 ± Ac. Total  
79.00 ± Ac. Net

DEED BOOK #197, Pg. 540

#74-7539  
#2002-2613

SW 1/4, SE 1/4  
40.00 ± Ac. Total  
39.00 ± Ac. Net

DEED BOOK #331, Pg. 404  
#2002-2614

SE 1/4, SE 1/4  
40.00 ± Ac. Total  
38.00 ± Ac. Net

DEED BOOK #243, Pg. 566  
#92-16579

ABANDONED CHICAGO & NORTHWESTERN RAILROAD R.O.W.

N. 40th ST.

COUNTY ROAD #405